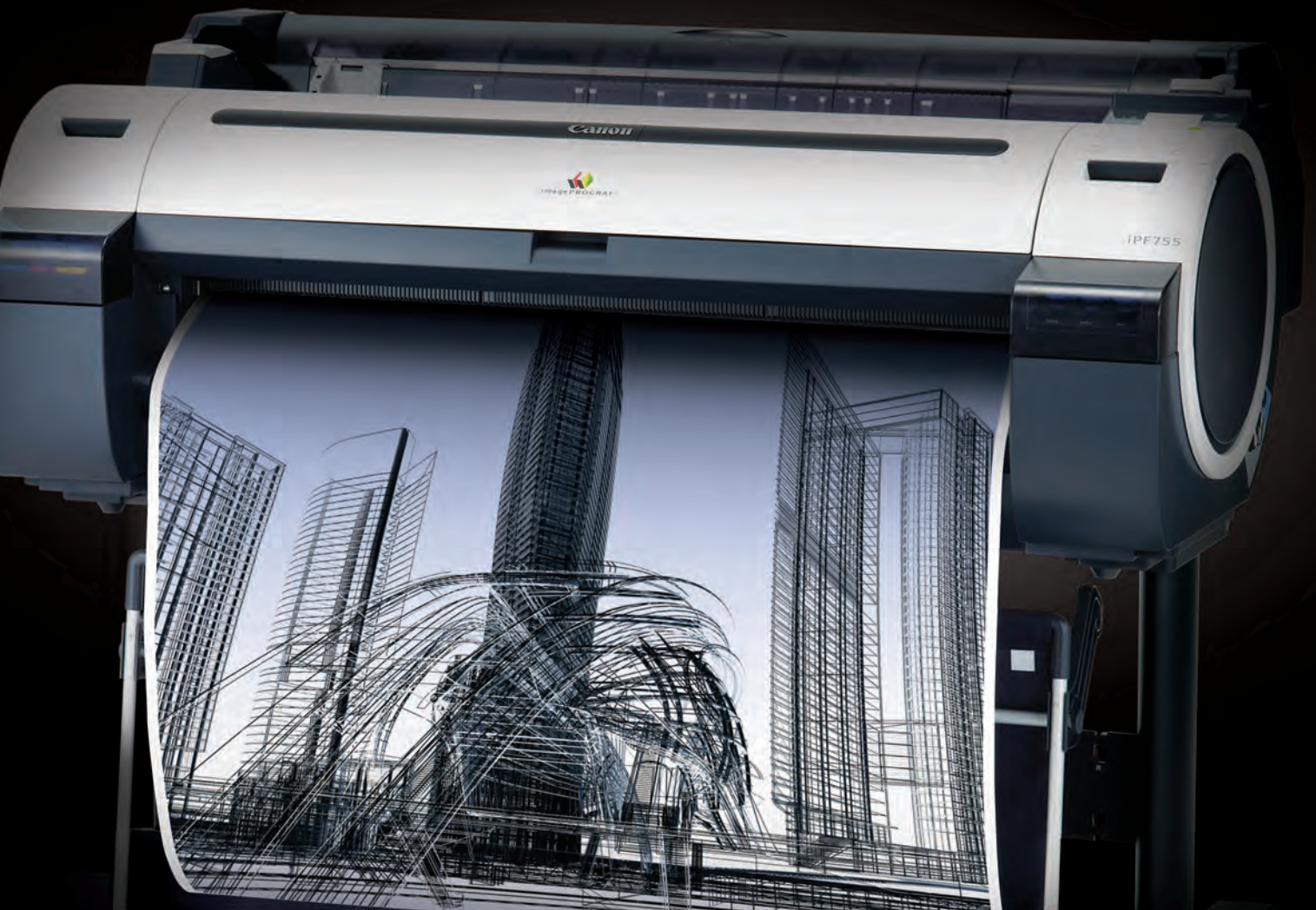


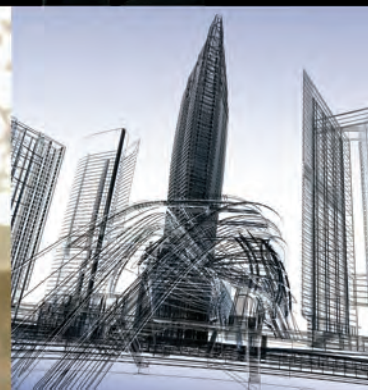
**Canon**

imagePROGRAF

 imagePROGRAF®  
iPF755/750/655/650



**TECHNICAL  
DOCUMENTS**  
LARGE-FORMAT PRINTING





## Introducing the 36" iPF755/750 and 24" iPF655/650 large-format printers.

The newest additions to Canon's world-renowned line of imagePROGRAF large-format printing solutions.

Specially designed for technical documents applications and general office printing, the iPF755/750 and iPF655/650 printers enable users to produce a diverse range of output. Whether the job is a complex technical document or a spectacular, full-color poster, you can get it done faster and easier than ever before. These printers work harder, so you can work smarter.

### NEW FEATURES

- **Space-saving design** with fully front-accessible operation for flush wall installation
- Outstanding **ease-of-operation**, from loading paper to navigating through a newly designed control panel
- New **accounting functions** collect printer job log information and calculate printing costs
- **Sub ink tank system** allows for changing ink without interrupting a print job
- Standard support for **Gigabit Ethernet** and Hi-Speed USB allow for fast transfers of large data volumes
- **Environmentally conscious** design made with less plastic, reduced CO2 emissions, and lower overall power consumption than previous models

# imagePROGRAF

## ADVANTAGES

Advanced, built-in features were specifically developed for these imagePROGRAF printers to produce high-speed, high-quality output with incredible ease.

### HIGH-QUALITY PRINTING

A super-high-density print-head ejects tiny 4pl droplets of ink that consistently produce **2400 x 1200 dpi output with fine lines within +/-0.10%** accuracy and as thin as 0.02mm. And Canon's unique 5-color Reactive Ink set delivers durable, smudge-resistant prints with sharp lines and text, bold colors, and smooth fills.

### MAXIMUM PRODUCTIVITY

Productivity is critical when you need to keep projects moving forward to meet tight deadlines. **Now you can print a D/A1 document in approximately 28 seconds\*** with Canon's advanced system architecture and one-inch print-head with 15,360 nozzles, engineered for high-volume printing. And with a built-in 80GB hard drive on the iPF755/655 printers, you can send large sets of files from multiple workstations, without locking up your computer and experiencing heavy downtime.

### LOW COST OF OPERATION

A number of important built-in features help minimize ink consumption, media waste, and maintenance costs to **significantly reduce total cost** of operation. The variety of features that contribute to the cost-savings includes the Economy Print Mode for lower cost per print, auto-rotation and nesting to minimize media waste, and Canon's

proprietary durable print-heads, which reduce maintenance costs. Canon has also earned **ENERGY STAR® qualification** for the imagePROGRAF printers. They draw only 140 watts of power during use to keep the total cost of operation to a minimum.

### VERSATILITY

Whether you need **direct printing support for HP-GL/2 and HP RTL files**, an HDI driver for AutoCAD®, or just an easy-to-use Windows® or Macintosh® printer driver for nesting full-color posters, Canon has what you need to simplify, strengthen, and complete your workflow. And for poster creation made simple, PosterArtist Lite and **Microsoft® Office Plug-in** give you all the tools you'll need to design and output impressive large-format signs and banners.

Fast and user-friendly, the iPF755/750 and iPF655/650 printers make it easier than ever to produce a wide range of large-format documents—from the most intricate technical drawings to presentation renderings, posters, and signs.

With three lines of imagePROGRAF large-format printers...whatever your needs, Canon has the answer.

\*When printing in fast mode on plain paper. Includes paper-cutting time.



# imagePROGRAF

## SPECIFICATIONS



**Print-Head**  
PF-04

**Technology**  
FINE (Full-Photolithography Inkjet Nozzle Engineering)

**Print Resolution (Max.)**  
2400 × 1200 dpi

**Line Accuracy\***  
±0.1% or Less

**Minimum Line Weight\*\***  
0.02mm

**Number of Nozzles**  
Matte Black: 5,120 Nozzles  
Other Colors: 2,560 Nozzles per Color

**Droplet Size**  
4 Picoliter

**Nozzle Pitch (Head Resolution)**  
1200 dpi × Two Rows

**Print-Head Swath**  
1.07 inch

**Ink Type**  
**Dye**  
Cyan (C), Magenta (M), Yellow (Y), Black (K)

**Pigment**  
Matte Black (MBK)

**Ink Tank**  
PFI-102: MBK, C, Y, K  
PFI-104: M

**Ink Tank Capacity**  
Starter: 90ml  
Replacement: 130ml

**Ink Supply Method**  
Tubing System with Sub-Tanks for Continuous Ink Supply

**Nozzle Recovery System**  
Non-firing Nozzle Detection and Compensation

**Printer Controller**  
L-COA Controller

**Printer Memory**  
256MB

**Hard Drive (iPF755/iPF655 only)**  
80GB (SATA)

**Mail Boxes (User Job Storage) (iPF755/iPF655 only)**  
1 Common Inbox, 29 User Inboxes (Password-protected)

**Media Feed**  
**Roll Feed**  
One Roll, Top-loading, Front Output

**Cut Sheet**  
One Sheet, Top-loading, Front Output

**Media Width**  
**Roll Feed**  
iPF755/iPF750: 10" – 36" (254mm – 914mm)  
iPF655/iPF650: 10" – 24" (254mm – 610mm)

**Cut Sheet**  
iPF755/iPF750: 8" – 36" (203.2mm – 914mm)  
iPF655/iPF650: 8" – 24" (203.2mm – 610mm)

**Printable Margins**  
**Roll Feed**  
All Sides: 0.12" (3mm) or 0" for Borderless

**Cut Sheet**  
Leading, Sides (Left and Right): 0.12" (3mm)  
Trailing: 0.91" (23mm)

**Maximum Print Length (Single Page)†**  
**Roll Feed**  
59" (18m)

**Cut Sheet**  
63" (1.6m)

**Borderless Printing Widths (Roll Media Only)**  
10", B4, A3, 14", A2, 17", B2, A1, 24"  
iPF755/iPF750 only: B1, A0, 36"

**Media Cutter**  
Durable Dual-blade Rotary Cutter

**Media Thickness**  
0.07 – 0.8mm (2.8 – 31.4mil)

**Media Core Sizes**  
2" and 3" Core (Adapter Included)

**Maximum Roll Outer Diameter**  
5.9" (150mm)

**Output Media Bin**  
Stackable Media Basket (Standard)

**Output Media Bin Capacity**  
20 Sheets (With Stackable Configuration)

**Printing Software**  
imagePROGRAF Printer Driver for Windows/Mac, HDI Driver††, Printer Driver Extra Kit for Windows/Mac (Free Layout, Color imageRUNNER® Enlargement Copy, Advanced Preview), Print Plug-in for Microsoft Word/Excel/PowerPoint for Windows, Digital Photo Front-Access for Windows, PosterArtist Lite for Windows

**Operating System†††**  
Windows 32-bit 2000/XP/ Server 2003/ Windows Vista®/Server 2008, Windows 64-bit XP/ Server 2003/Windows Vista/Server 2008 (Available in download only), Macintosh OS X CUPS (10.4.9, 10.5.x) 32-bit, Macintosh OS X CUPS (10.5.x) 64-bit (Available in download only)

**Print Language**  
GARO, HP-GL/2, HP RTL

**Interface**  
USB 2.0 Hi-Speed, 10/100/1000Base-T/XT

**Protocol**  
TCP/IP (IPv4/IPv6), IPX/SPX, AppleTalk®, SNMP (Canon MIB supported), HTTP

**Acoustic Noise**  
**Operation**  
iPF755/iPF750: 50dB (A) or Less  
iPF655/iPF650: 47dB (A) or Less

**Standby**  
35dB (A) or Less

**Acoustic Power**  
iPF755/iPF750: Approx. 6.6 Bels  
iPF655/iPF650: Approx. 6.4 Bels

**Power Supply**  
AC 100–240V (50–60Hz)

**Power Consumption**  
**Maximum**  
140W or Less

**Standby**  
5W or Less

**Power Off**  
1W or Less (Executive Order Compliant)

**Certifications**  
**Electrical Safety Regulations**  
UL® (USA), C-UL (Canada), S mark (Argentina), CE mark (EN60950, EN55022 classB, EN61000-3-2, EN-61000-3-3, EN55024) (EU), CB certification (Others)

**Electromagnetic Interface Regulations**  
FCC Class B (USA), IC Class B (Canada)

**Environmental Certifications**  
ENERGY STAR® (Worldwide), RoHS Directive, WEEE, Executive Order (USA)

**Operational Environment**  
**Temperature**  
59 – 86 F° (15 – 30 C°)

**Relative Humidity**  
10 – 80% (No Condensation)

**Printer Dimensions (H × W × D) and Weight with Stand and Basket**  
iPF755/iPF750: 41.8" × 51.3" × 34.3"  
(1,062mm × 1,304mm × 870mm)  
Approx. 139 lb. (63kg)  
iPF655/iPF650: 41.8" × 39.3" × 34.3"  
(1,062mm × 997mm × 870mm)  
Approx. 119 lb. (54kg)

**Package Dimensions (H × W × D) and Weight\***  
**Printer Main Package**  
iPF755/iPF750: 30.3" × 56.5" × 32.7"  
(770mm × 1,434mm × 830mm)  
Approx. 166 lb. (75kg)  
iPF655/iPF650: 30.0" × 44.4" × 32.7"  
(762mm × 1,127mm × 830mm)  
Approx. 139 lb. (63kg)

**Stand Package**  
iPF755/iPF750: 9.4" × 55.1" × 30.7"  
(1,585mm × 1,263mm × 2,348mm)  
Approx. 38 lb. (17kg)  
iPF655/iPF650: 10.4" × 43.8" × 32.1"  
(263mm × 1,113mm × 816mm)  
Approx. 36 lb. (16kg)

**Options**  
PosterArtist  
iPF755/iPF750: Roll Holder Set (RH2-33)  
iPF655/iPF650: Roll Holder Set (RH2-26)

**User-Replaceable Items**  
Ink Tank (PFI-102 MBK, C, Y, K; PFI-104 M)  
Print-Head (PF-04)  
Maintenance Cartridge (MC -10)

- \* Line accuracy repeatability is guaranteed after a user performs necessary adjustment and under the same environmental conditions. Applies to media for line drawing (Plain Paper, Coated Paper, CAD Translucent Matte Film, and CAD Tracing Paper) only.
- \*\* Theoretical value based on data resolution.
- † The maximum printable length varies, depending on the application, OS, and RIP used.
- †† For AutoCAD or AutoCAD LT 2000/2000i/2002/2004/2005/2006/2007/2008/2009
- ††† For imagePROGRAF Printer Driver. For printing from PostScript® applications such as Adobe Illustrator® or QuarkXPress™, please use a PostScript compatible RIP package. For a list of Canon recommended RIP packages, please consult with Canon Alliance and Industry Market program list of RIP vendors at [www.usa.canon.com](http://www.usa.canon.com).
- The printer will be shipped on a pallet with stand box strapped on top of the main unit. Shipping dimensions and weight for iPF755/iPF750 are (H×W×D) 39.7"×56.5"×32.7", 205lb., for iPF655/iPF650 are 40.4"×44.4"×32.7", 176lb.

**Canon**  
image*ANYWARE*

1-800-OK-CANON  
[www.usa.canon.com](http://www.usa.canon.com)

Canon U.S.A., Inc.  
One Canon Plaza  
Lake Success, NY 11042

As an ENERGY STAR® Partner, Canon U.S.A., Inc. has determined that these products meet the ENERGY STAR guidelines for energy efficiency. ENERGY STAR and the ENERGY STAR mark are registered U.S. marks. PostScript and Illustrator are registered trademarks of Adobe Systems Incorporated in the United States and/or other countries. AutoCAD is a trademark of Autodesk, Inc. in the United States. Macintosh and AppleTalk are registered trademarks of Apple Inc. Microsoft, Windows, and Windows Vista are registered trademarks of Microsoft Corporation in the United States and/or other countries. UL is a registered trademark of Underwriters Laboratories Inc. QuarkXPress is a trademark of Quark, Inc. and all applicable affiliated companies, Reg. U.S. Pat. and Tm. Off. and in many other countries. CANON, IMAGEPROGRAF, IMAGERUNNER, and the GENUINE logo are registered trademarks of Canon Inc. in the United States and may also be registered trademarks or trademarks in other countries. IMAGEANYWARE is a trademark of Canon. All referenced product names and other marks are trademarks of their respective owners. Specifications and availability subject to change without notice. ©2009 Canon U.S.A., Inc. All rights reserved.

0133W077  
0409-iPF755-25M-LDM

